



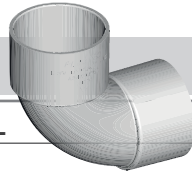
PLASTEC

# 40mm to 100mm DWV Back to Basics Range

Plastec offers a wide range of basic DWV products for all your everyday plumbing needs.

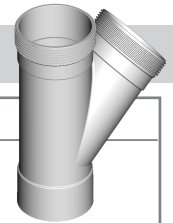
Please also see additional flyers for details on our larger 150mm & 225mm sizes.

## Bends



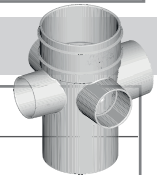
ID	INLET	OUTLET	∠	
<b>5 Degrees</b>				
17892	100 Socket	100 Socket	5	
18017	100 Socket	100 Pipe Size	5	
<b>15 Degrees</b>				
17893	100 Socket	100 Socket	15	
18018	100 Socket	100 Pipe Size	15	
<b>30 Degrees</b>				
17894	100 Socket	100 Socket	30	
18019	100 Socket	100 Pipe Size	30	
<b>45 Degrees</b>				
17884	40 Socket	40 Socket	45	
16377	40 Socket	40 Pipe Size	45	
18795	40 Socket	40 Spigot	45	
17897	50 Socket	40 Pipe Size	45	Reducing
17886	50 Socket	50 Socket	45	
16378	50 Socket	50 Pipe Size	45	
18796	50 Socket	50 Spigot	45	
17888	65 Socket	65 Socket	45	
17898	65 Socket	65 Pipe Size	45	
17890	80 Socket	80 Socket	45	
17895	100 Socket	100 Socket	45	
18782	100 Socket	100 Socket	45	Heavy Duty
18215	100 Socket	100 Pipe Size	45	
18781	100 Socket	100 Pipe Size	45	Heavy Duty
18154	100 Socket	100 Spigot	45	
<b>88 Degrees</b>				
17885	40 Socket	40 Socket	88	
12960	40 Socket	40 Pipe Size	88	
17903	40 Socket	40 Spigot	88	
17887	50 Socket	50 Socket	88	
12951	50 Socket	50 Pipe Size	88	
12961	50 Socket	50 Pipe Size	88	
17889	65 Socket	65 Socket	88	
14705	65 Socket	65 Pipe Size	88	
15628	65 Socket	65 Pipe Size	88	
17891	80 Socket	80 Socket	88	
15882	80 Socket	80 Spigot	88	
17896	100 Socket	100 Socket	88	
18020	100 Socket	100 Pipe Size	88	
15571	100 Socket	100 Spigot	88	

## Junctions



ID	INLET	OUTLET	∠	
<b>45 Degrees</b>				
17903	40 Socket	40 Socket	45	
17905	50 Socket	50 Socket	45	
17907	65 Socket	65 Socket	45	
17909	100 Socket	50 Socket	45	Reducing
17910	100 Socket	65 Socket	45	Reducing
17911	100 Socket	100 Socket	45	
18022	100 Socket	100 Pipe Size	45	
18532	100 Male/Male/Female		45	Heavy Duty
<b>88 Degrees</b>				
17904	40 Socket	40 Socket	88	
17906	50 Socket	50 Socket	88	
17908	65 Socket	65 Socket	88	
19072	100 Socket	50 Socket	88	Reducing
19071	100 Socket	65 Pipe Size	88	Reducing
17912	100 Socket	100 Socket	88	Female/Female
18023	100 Socket	100 Socket	88	Male/Female

## 4 Way Risers



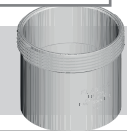
ID	∅	BRANCH
17116	80	50 x 40 x 40 x 40
17232	80	50 x 40 x 50 x 40
17118	100	50 x 50 x 40 x 40
17233	100	50 x 50 x 50 x 40

## Repair Couplings



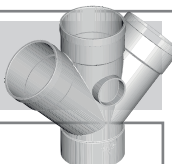
ID	∅	
<b>Repair</b>		
15117	100	Repair
<b>Slip</b>		
15873	100	Slip
<b>RRJ Slip</b>		
18870	40	RRJ Slip
18871	50	RRJ Slip
15302	100	RRJ Slip

## Couplings & Connectors



ID	∅	
17926	40	Straight Socket
17927	50	Straight Socket
17928	65	Straight Socket
14551	100	Straight Socket
16708	100	Threaded
15129	100	Expansion
15128	100	Expan. Assembly

## Double Junctions



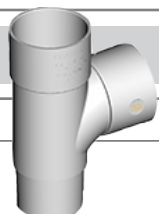
ID	∅	
16775	100	45
16774	100	88

## Disconnecter Trap



ID	∅	OUTLET
17102	100	Socket

## Slab Junctions



ID	INLET	OUTLET	∠
<b>88 Degrees</b>			
19406	40 Socket	40 Spigot	88
19407	50 Socket	50 Spigot	88
19504	100 Socket	100 Spigot	88

## Slab Repair Couplings



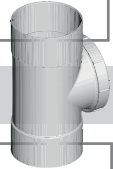
ID	INLET	OUTLET
12925	40 Socket	40 Spigot
12926	50 Socket	50 Spigot
15950	80 Socket	80 Spigot
15956	100 Socket	100 Spigot
<b>Extended</b>		
12930	100 Pipe Size	100 Spigot
<b>Flanged</b>		
12935	40 Socket	40 Spigot
12936	50 Socket	50 Spigot
12937	65 Socket	65 Spigot
12938	80 Socket	80 Spigot
12939	100 Socket	100 Spigot

40MM - 100MM

### Cap & Linings

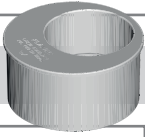


ID	INLET	OUTLET	NUT
<b>Straight</b>			
11960	40 BSP	40 Spigot	Plastic
11970	40 BSP	40 Spigot	Brass
11961	50 BSP	50 Spigot	Plastic
11962	50 BSP	40 Spigot	Plastic
<b>Bend</b>			
11963	40 BSP	40 Spigot	Plastic
11964	50 BSP	50 Spigot	Plastic
<b>Low Bend</b>			
15472	40 BSP	40 Spigot	Plastic



### Inspection Openings

ID	Ø	OUTLET	
17914	100	Female/Female	
17915	100	Male/Female	
18834	100	Male/Male	Heavy Duty
<b>Expansion</b>			
18043	100	Female/Female	Expansion
<b>45 Degree Junctions</b>			
18033	100	45	Left Hand
18034	100	45	Right Hand
<b>Bend</b>			
19121	40 Socket	88	
17899	50 Socket	88	
17900	65 Socket	88	



### Reducers

ID	Ø
<b>Pipe</b>	
17499	50 x 40
16351	65 x 40
16352	65 x 50
14564	100 x 40
14894	100 x 50
17500	100 x 65
<b>Socket</b>	
19690	40 x 32
16787	50 x 40
16788	65 x 50
16789	65 x 40
17496	80 x 50
16785	100 x 50
16783	100 x 65
17497	100 x 80

ID	Ø
<b>Level Invert Taper</b>	
17916	50 x 40
17917	65 x 40
17918	65 x 50
17919	80 x 40
17920	80 x 50
17921	100 x 50
17922	100 x 65
17923	100 x 80

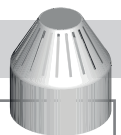
### End Caps



ID	Ø
<b>Light Duty</b>	
15027	40
15028	50
15029	65
15030	80
15026	100
<b>Heavy Duty</b>	
15605	40
15606	50
15607	65
15608	80
14980	100

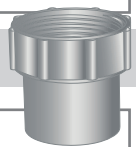
ID	Ø
<b>Threaded</b>	
15001	100
<b>In Pipe Plug</b>	
15963	40
15964	50
15962	100
<b>In Pipe Cap</b>	
14989	40
14990	50
14998	65
14999	80
14997	100

### Vent Cowl & Accessories



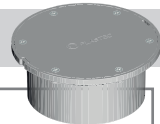
ID	Ø	OUTLET
14992	50	Open
14991	100	Open
<b>Mozzie Resistant</b>		
14994	50	Plastic
16384	50	Mesh
14993	100	Plastic
16383	100	Mesh
<b>Covered</b>		
12970	50	
12971	100	

### Connectors & Adaptors



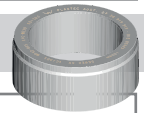
ID	Ø	OUTLET	
<b>Iron Adaptor</b>			
14984	40	Pipe Size	Male
14977	40	Pipe Size	Female
14985	50	Pipe Size	Male
14977	50	Pipe Size	Female
<b>Iron Connector</b>			
14986	40	Socket	Male
14978	40	Socket	Female
14987	50	Socket	Male
14979	50	Socket	Female

### Bolted Trap Screws



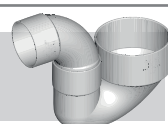
ID	Ø	NUT	
11676	100	Plastic	Socket
11680	100	Plastic	Spigot
11686	100	Brass	Socket
11696	100	Brass	Spigot
11687	100	Chrome Brass	Socket
11697	100	Chrome Brass	Spigot

### Earthenware



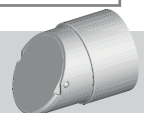
ID	Ø	
14913	100	Adaptor DWV to EW Socket
14876	100	Adaptor DWV to EW Spigot
14946	100	EW to DWV Slab Adaptor
15154	100	Rubber O-Ring

### Floor Waste (Palazzi)



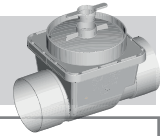
ID	Ø	OUTLET
17134	100 x 65	Socket
17133	100 x 50	Socket
17132	80 x 65	Socket
17131	80 x 50	Socket

### Flap Valves



ID	Ø
14972	50
15254	100

### Reflux Valve



ID	Ø
16662	100

### Finishing Collars & Grate



ID	Ø	OUTLET
<b>Finishing Collars</b>		
11666	100	Socket
11667	100	Spigot
<b>Grate Flat</b>		
11671	140	